

# CITY OF PARCHMENT COMMUNITY PARKS AND RECREATION PLAN 2022-2026



Adopted:

## Acknowledgements

### City Commission

Robert Britigan III, Mayor  
Tom Jordan, Vice Mayor  
Michael Conner, Commissioner  
Tammy Cooper, Commissioner  
Holly Evans, Commissioner  
Doug Fooy, Commissioner  
Robin Madaras, Commissioner

### Planning Commission

Kent DeBoer, Chair  
Sandy Bliesener, Commissioner  
Sara Dean, Commissioner  
Cheryl Lyon-Jenness, Commissioner  
John Tecca, Commissioner

### City Staff

Nancy Stoddard, City Manager  
Shannon Stutz, Treasurer/Clerk

**Table of Contents**

**CITY OF PARCHMENT  
COMMUNITY PARKS AND RECREATION PLAN  
2022-2026**

INTRODUCTION.....3

1. COMMUNITY DESCRIPTION.....5

2. ADMINISTRATIVE STRUCTURE.....7

3. RECREATION INVENTORY.....10

4. NATURAL RESOURCE INVENTORY.....21

5. DESCRIPTION OF THE PLANNING PROCESS.....23

6. DESCRIPTION OF THE PUBLIC INPUT PROCESS.....24

7. GOALS AND OBJECTIVES.....26

8. ACTION PLAN.....28

9. SUPPORTING DOCUMENTATION.....32

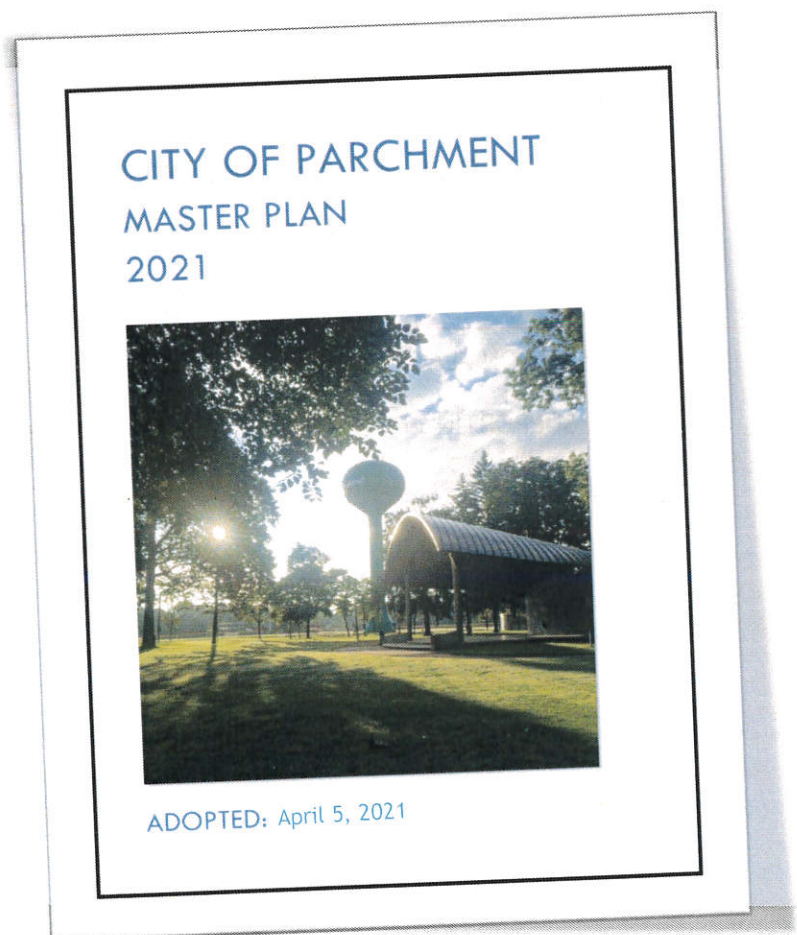
APPENDIX

## INTRODUCTION

The Parchment Parks and Recreation Master Plan that follows is the culmination of a planning process that began in 2019, when the Planning Commission, charged by the Parchment City Commission with the task of updating the City's Master Plan, began their work.

With the assistance of the W. E. Upjohn Institute for Employment Research, the Planning Commission completed the City's Master Plan in early 2021. The scrutiny of community resources and needs together with community input underscored not only the contribution of existing recreational resources to community well-being but also emphasized the feasibility of developing even more recreational assets, especially along Parchment's mile-long frontage on the Kalamazoo River.

In spring 2021, the Planning Commission began their work on the Parks and Recreation Master Plan, and again sought community input, this time focused directly on recreational and park resources and needs. The Parks and Recreation Master Plan that emerged from this process will shape community decision-making from 2022 until 2027. The Plan has been prepared in accordance with the MDNR's Guidelines for the Development of Community Park, Recreation, Open Space, and Greenway Plans. The mission for Parchment, *Cherished Past, Sustainable Future*, articulated in the new Master Plan, has also guided the development of this Parks and Recreation Master Plan for the City of Parchment.



## CHAPTER 1: COMMUNITY DESCRIPTION

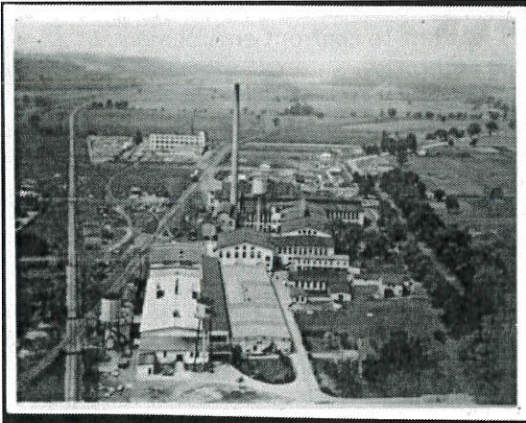


Photo Courtesy Parchment Community Library

The City of Parchment, approximately one mile square, is located along the banks of the Kalamazoo River about three miles north of downtown Kalamazoo. The city is bordered to the west by the river, to the north by Cooper Township, and to the south and east by the City of Kalamazoo and Kalamazoo Township. Although it grew up as a “mill town” around the Kalamazoo Vegetable Parchment Company (KVP), it is today largely a residential community with slightly over 700 households and a population of just under 2000 citizens. About 22% of the City’s land area including the former KVP mill site, lies to the west of Parchment’s residential neighborhoods. Small commercial areas line Riverview Drive, the main north-south route through the city.

Through much of its early history, many Parchment residents worked for KVP or the paper companies that followed. Most enjoyed home ownership and the many amenities that KVP and then the City of Parchment provided for the community. Today, the paper industry is gone from Parchment, and although many residents have lived in the community their entire lives, the City’s population is changing. In terms of age, race, home ownership, and economic resources, Parchment is much more diverse community than it was in the heyday of the Kalamazoo Vegetable Parchment Co.

Despite all the changes in Parchment’s history, a deep pride in the local parks and recreation programs and a history of community involvement remain important features of the city. Cultivated by Kalamazoo Vegetable Parchment President Jacob Kindleberger, these sentiments were critical as he aimed to make both the mill and the little village surrounding it “models for the world” and home to happy, productive workers. Central to his vision of a model community was a parks and recreation program that could engage all citizens. In 1922, KVP subsidized the building of a Community House that housed, among other amenities, a large auditorium and gymnasium that for years provided Parchment residents with a place to play and learn.

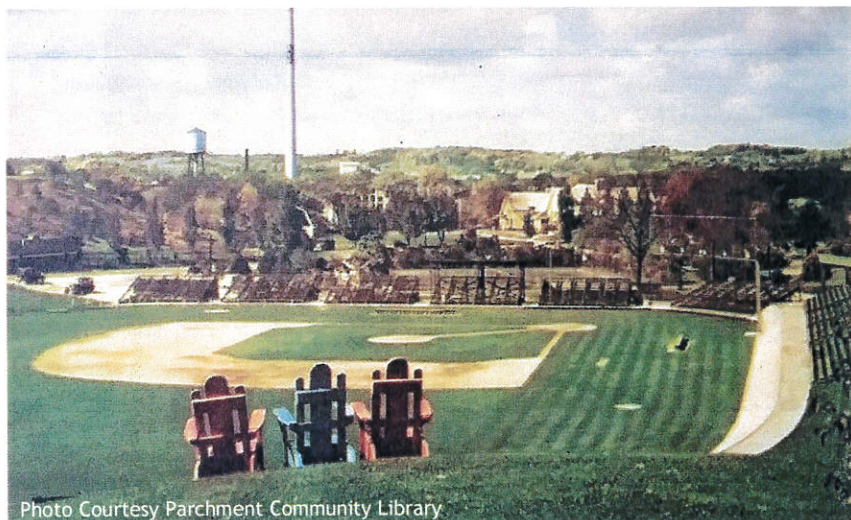


Photo Courtesy Parchment Community Library

In 1930, Mr. Kindleberger again promoted community recreation by donating 38 acres in the midst of Parchment’s growing residential neighborhood for what he termed “recreational fields.” The newly formed Village of Parchment named the park in honor of Mr. and Mrs. Kindleberger, and with unprecedented help from both KVP and the community, Kindleberger Park quickly took shape. With its tennis courts, baseball diamonds, hiking trails, sledding hills and formal garden, the Park offered something for everyone, and soon became the beloved center of community life it remains today.

The image and reality of Parchment as a “model community” persisted through the 1950s, but gradually, challenges in the paper industry, new company leadership, and a post-World War II world brought changes that would shake the community. For many local residents, the closure of Parchment’s last paper mills in the 2000s brought an unimagined new reality to their little city. A major portion of the tax base had disappeared overnight, and the community was left to confront environmental contamination and the decaying hulk of a huge paper-making enterprise.



The challenges remain, but the Parchment community has turned to its parks and recreation assets as it seeks to define a sustainable future for the city. The Kindleberger Festival for the Performing Arts continues to draw thousands of visitors to the city as it has since 1982. Volunteer groups lend a hand to tend the gardens in Kindleberger Park and to clean up other areas in the city. In addition, Little League, Rocket Football, and school sports teams continue to thrive. Other groups like Envisioning Our River and this Planning Commission are looking ahead, and turning to the Kalamazoo River and the former



KVP mill site as environmental and recreational opportunities awaiting creative, thoughtful development

Top: The Parchment Mill Redevelopment Site is poised for a new future.  
Bottom: Kindleberger Park serves as the centerpiece of the Parchment community.

## CHAPTER 2: ADMINISTRATIVE STRUCTURE

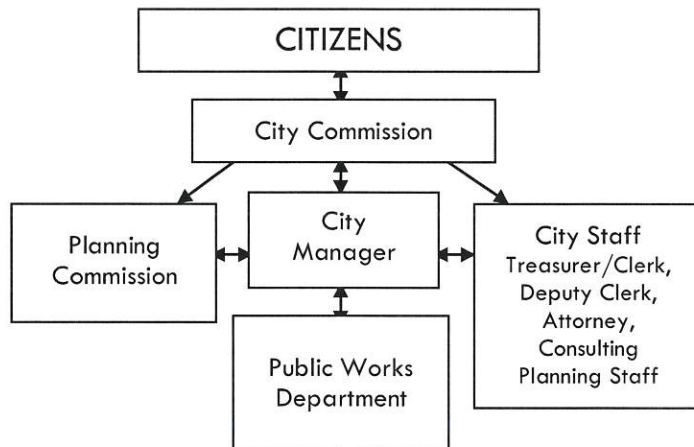
### Role of Commissions

The City of Parchment does not have a formal parks and recreation department or focused committee at the Commission level. The City Commission works closely with the City Manager to develop and manage the annual budget. The Planning Commission, through the development of the Community Master Plan and this document, are the primary advocates for park improvements, and have included the formation of a Parks and Recreation focused committee in the master plan goals.

### Department Description and Organizational Chart

Administration and day-to-day management of the parks is the responsibility of the City Manager's office. The City Manager's staff includes the Treasurer/Clerk and Deputy Clerk.

Parchment's Public Works Department carries out the daily operation and maintenance of the City's recreational facilities including Kindleberger Park, and Riverfront, City Hall, and Devon Parks. This crew of four full-time and periodic seasonal part-time employees report to the City Manager. Due to Parchment's very limited financial resources, the four-person Public Works Department is also responsible for the general upkeep of the entire City.



### Annual and Projected Budgets for Operations, Maintenance, Capital Improvements and Recreation Programming

Funding for the Parks, Recreation & Culture budget, including salaries and related expenses, maintenance, and capital improvements, is accounted for as a separate department in the City's General Fund budget. For budgeted amounts, see Table 1.

Table 1. Parks, Recreation & Culture Budgeted Amounts

2017	\$144,220.00
2018	\$140,488.00
2019	\$153,775.00
2020	\$130,650.00
2021	\$173,500.00

## Role of Volunteers

Despite limited tax revenues, Parchment has a long history of volunteer organizations that both enhance recreational programming and assist with maintenance of park and recreational facilities. These organizations along with the services they provide include:

- **Kindleberger Arts Commission**—Sponsors the Kindleberger Summer Festival of the Performing Arts; Festival Day, and the summer-long Kindleberger Summer Concert Series. In 2021, a combined total of approximately 11,000 people attended these events.
- **Parchment Little League**—Provides Little League opportunities for youth between the ages of 7 and 14. A T-Ball program serves younger children. In 2021, 313 youth participated in these programs. Little League programs are conducted in Kindleberger Park.
- **Parchment Rocket Football**—Provides tackle, flag, and cheer programs for boys and girls. 205 youth participated in the program in 2021. Rocket football and cheer teams play in Kindleberger Park.
- **Boy and Girl Scout organizations.**
- **Parchment Garden Club**—Since 1944, this organization has maintained some garden areas in the City, has provided funding for capital improvements in Kindleberger Park, and has contributed resources for the restoration of the formal garden in Kindleberger Park. In 2019, the Garden Club provided substantial funding for a new Michigan State Historical Marker honoring Kindleberger Park.
- **Bring Back the Garden Crew**—Since 2018, this group of twelve volunteers, with initial help from the Parchment Soccer team and Scout groups, has refurbished and now maintains the formal sunken garden in Kindleberger Park.
- **Parchment CCC (Community Clean Up Crew)**—Since 2020, this group of twenty community volunteers, with the assistance of the Public Works crew, undertakes specific “clean-up” projects along the Kalamazoo River, in Kindleberger Park, and in City neighborhoods.
- **Envisioning Our River**—Instituted by the City of Parchment in 2019 with grant support from the Kalamazoo Community Foundation, this cooperative effort convened both Parchment residents and Kalamazoo River stakeholders from local governments and environmental groups. These visioning sessions focused on developing the Kalamazoo River as a regional recreational, environmental, and economic asset.
- **Parchment Community Library**—The Library adjoins Kindleberger Park and has provided a meeting place, recreational program support and development, the loan of sports equipment for use in the park, and many other services that enhance recreational opportunities in Parchment.

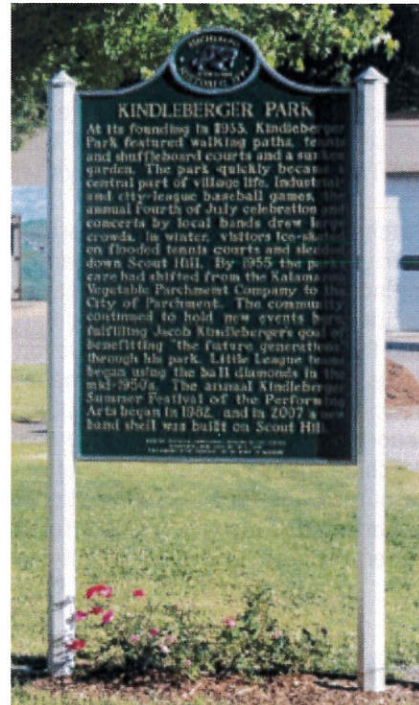


Photo Courtesy Matt Dean



## Current and Past Funding Sources

Grant-funded assistance has also enhanced Parchment’s parks and recreation programs. See Table 2 below.

Table 2. Parks and Recreation Grants				
Project Title	Project Year	Grant Source	Amount	Description
Parchment Riverfront Park	1992	DNR Natural Resources Trust Fund	\$71,900	Developed a linear riverfront park in Parchment, including river overlooks and short paved trail
Kindleberger Summer Festival	2021	Irving S. Gilmore Foundation	Grant amount not disclosed	Provided support for the Kindleberger Summer Festival productions and concerts for many years
Kindleberger Summer Festival	2021	Harold and Grace Upjohn Foundation	\$5,000	Provided support for Kindleberger Summer Festival productions and concerts
Tree Planting Program	2017-19	Consumers Energy Community Street and Boulevard Tree Planting Grant Programs	\$1,200	Purchase trees for planting in Kindleberger Park
Envisioning Our River	2019	Kalamazoo Community Foundation	\$4,800	Convened two stakeholder groups to “envision” and discuss the development of the Kalamazoo River as a regional asset
Commerce Lane/ Railroad Trestle	2021	Kalamazoo River Trustees	Final amount of grant undetermined	Combine riverbank restoration efforts with the partial removal of a railroad trestle to improve river flow; develop a viewing/fishing platform and accessible kayak launch nearby
Urban Wildlife Corridor Project	2021	Kalamazoo River Trustees	Final amount of grant undetermined	Regional initiative organized by the City of Parchment to projects, interpret and enhance the Kalamazoo River as an essentially a wild river in an urban area.

The DNR Michigan Natural Resources Trust Fund logo is displayed in a cast stone plaque mounted on the covered overlook seating area at Parchment Riverfront Park.



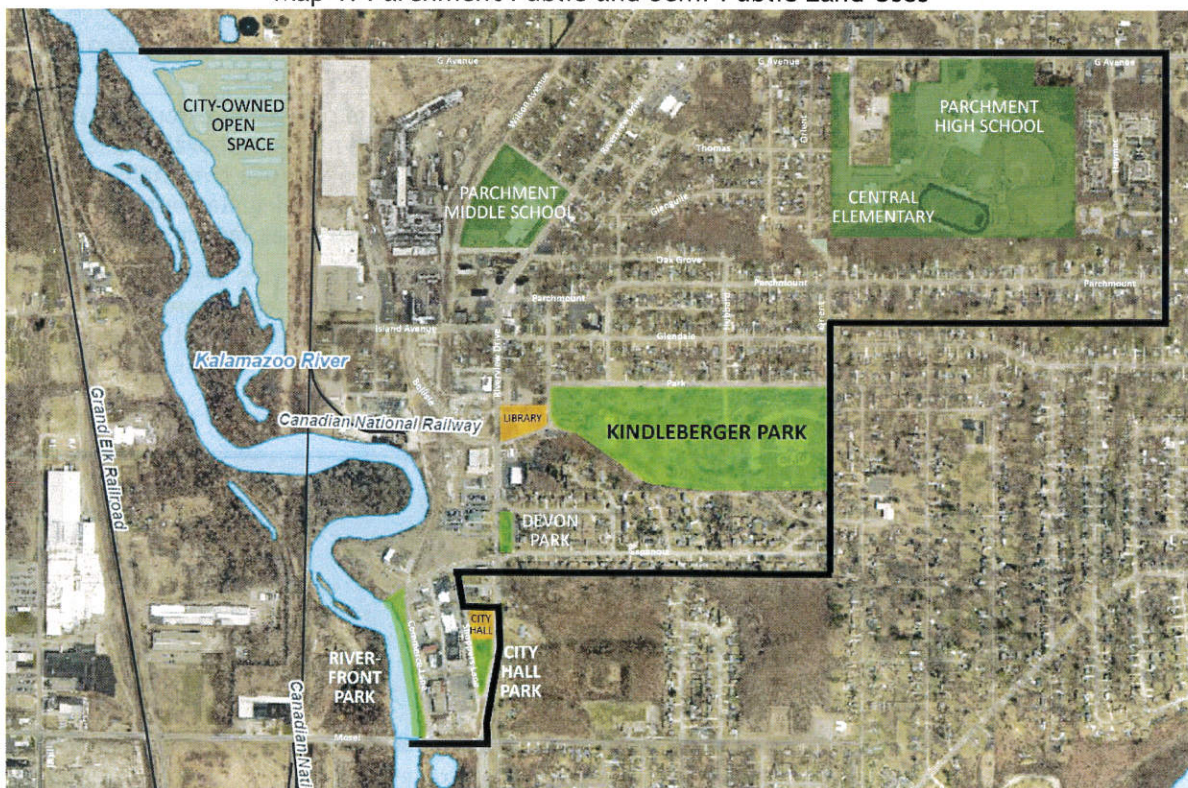
## CHAPTER 3: RECREATION INVENTORY

### Description of Methods Used to Conduct the Inventory

Planning Commissioners conducted inventories of Parchment's four parks by walking through each, noting and photographing the existing built and natural features on several different occasions. Some portions of the text are taken directly from the City of Parchment Master Plan completed in 2021.

Public and semi-public land uses cover over 116 acres of land in Parchment. This includes government buildings, public and private park lands, schools, and religious institutions. Public infrastructure uses primarily occupy roughly 70 acres. Schools, such as Parchment High School in the northeast quarter of the City and Parchment middle school in the northwest section along Riverview Drive, cover the largest land areas of this type of use. Kindleberger Park, located in the center of the City, is the City's most highly used asset. (Upjohn Institute, 2021, pg. 16) See Map 1 below.

Map 1. Parchment Public and Semi-Public Land Uses



## Barrier-Free Accessibility

The passage of the Americans with Disabilities Act of 1990 (ADA) requires all areas of public service, including parks and other recreation facilities, to have barrier-free accessibility. Parchment's park facilities were evaluated in accordance with the MDNR standards based on the five-point system to determine if a person who has limited sight or is blind; uses a wheelchair; has a hearing impairment or is deaf; uses a walking aid; and/or has a mental impairment can independently access and use the park or facility safely. The system is described below and the accessibility rankings for the City of Parchment's park facilities can be found in the following park descriptions.

- Level 1. The park is not accessible to people with a broad range of physical disabilities. The site includes little paved areas and the facilities such as play equipment or picnic areas are not easily accessible.
- Level 2. The park is somewhat accessible to people with a broad range of physical disabilities. Either the parking area or pathways are paved, but not both. Many of the facilities such as play equipment or picnic areas are not easily accessible.
- Level 3. The park is mostly accessible to people with a broad range of physical disabilities. Most of the parking areas and pathways are paved, and some of the facilities such as play equipment or picnic areas are accessible but may not be completely barrier-free.
- Level 4. The park is completely accessible to people with a broad range of physical disabilities. Parking areas and pathways are paved, and most of the facilities such as play equipment or picnic areas are easily accessible.
- Level 5. The entire park was developed or renovated using the principles of universal design, a design approach which enables all environments to be usable by everyone, to the greatest extent possible, regardless of age, ability, or situation.

## Inventory of all Community Owned Parks and Recreation Facilities

### Sidewalks & Walking Trails

The City has an extensive system of sidewalks along all major streets and most secondary streets. (Upjohn Institute, 2021, pg. 16)

### Cycling Facilities

Of all the City streets, only Riverview Drive and G Avenue present any challenges for cyclists. G Avenue has paved shoulders suitable for bicycle travel, while Riverview Drive has parking lanes on both sides and wide lane widths but no marked bicycle lanes. (Upjohn Institute, 2021, pg. 16)

### Recreational Trails

The Kalamazoo River Valley Trail is 22 miles of paved multiuse trail that primarily runs east-west and north through multiple municipalities in Kalamazoo County. The trail has three legs that all connect in downtown Kalamazoo. The western leg runs through the urbanized areas of Kalamazoo City and Kalamazoo Township and joins the KalHaven Trail in Oshtemo Township. The northern leg of the KRVT passes very close to Parchment as it runs along Riverview Drive and turns west on Mosel Avenue, from there the trail travels along the western bank of the Kalamazoo River through the Nature Center and terminates at D Ave. The eastern leg also hugs the Kalamazoo River but on the southern bank (the River turns North near Downtown Kalamazoo) through Comstock and terminates in Galesburg. Future plans for this east leg include a connection with the Battle Creek Linear Park which is part of plans to connect to a larger trail system connecting Lake Michigan to Lake Huron. A southern leg which will connect to the Portage and Vicksburg trail system is also anticipated. (Upjohn Institute, 2021, pg. 17)

## Kindleberger Park

### Size and Location

40 acres bordered by Park Avenue, Parkdale Street, Park Drive, and the east city boundary

### Service Area

City of Parchment and the Southwest Michigan region.

### Description/Overview

The Park is an area of 40 acres donated to the City in the early 1930's by the Park's namesake and City founder Jacob Kindleberger and his wife Lucinda. The topography is defined by both level recreation areas and steeply sloped hills. Most picnic and passive recreation areas are heavily shaded with mature trees.



In addition to the built amenities which include ball fields, tennis and pickle ball courts, restroom buildings, playgrounds, picnic shelters, paved pathways, a sunken formal perennial garden with gazebo, a bandshell and two on-site paved parking lots, Kindleberger serves as the heart of the Parchment community. Annual events such as Little League Opening Day, the Kindleberger Festival, Summer Concert Series, and Christmas Chocolate are hosted at the park, and weddings are held in the sunken garden almost every weekend in good weather. Little League, Rocket Football, and cheerleading activities fill the park with Parchment families in the spring and fall. The play areas and tennis and pickleball courts are used daily and Park Avenue is lined with the parked cars of families who come from all over to enjoy Kindleberger Park's fantastic sledding hills.

Map 2. Kindleberger Park

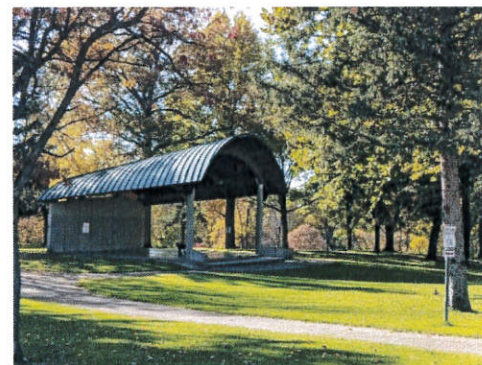
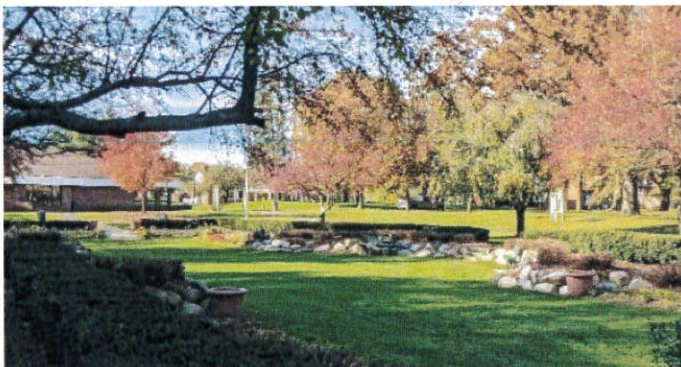
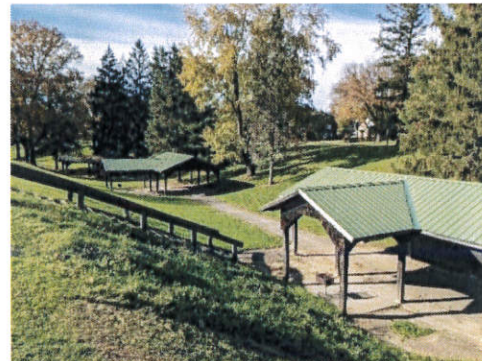


Amenities:

- Three baseball fields
- Two softball fields
- Ballfield equipment building
- Two dugouts at each ball field
- Concession/ restroom building
- Bandshell/stage
- One tennis court
- Four pickle ball courts
- Five picnic shelters
- Restroom building
- Two playgrounds with swings & climbing structures on sand surfacing
- Sunken, formal garden with annual & perennial floral plantings
- Gazebo with electric available
- Sledding hill
- Passive recreation lawns shaded under legacy trees
- Picnic tables and benches thru-out park
- Drinking fountains
- Electric available adjacent to sunken garden
- Wayfinding lighting and parking lot lighting
- Paved parking areas dispersed thru-out park and on street parallel parking

Accessibility

- 2-some of the facilities/park areas meet accessibility guidelines.



## Devon Park

### Size and Location

.5-acre bordered by Riverview Drive, Espanola Avenue, Devon Street, and private property.

### Service Area

City of Parchment and public transportation users.

### Description/Overview

The Park is an area of .5 acres having consistently sloping topography from the easterly edge (private property) toward Riverview Drive. Electric is available on-site. Vegetation in the park includes several large trees and two masses of large shrubs in the sloped lawn. Parking is available only on Devon Street and Espanola Avenue east of the park. There are no built amenities in the park. A Metro Bus stop is located midway along Riverview Drive.

### Accessibility

There are no facilities developed in the park.

Map 3. Devon Park



Map 4. Parchment Riverfront and City Hall Parks



### Parchment Riverfront Park

#### Size and Location

.5-acre strip of land along the east bank of the Kalamazoo River, bordered by Commerce Lane.

#### Service Area

City of Parchment and the Southwest Michigan region

#### Description/Overview

The Kalamazoo River Linear Park was developed in 1992 with support of a DNR Natural Resources Trust Fund grant. The Park's topography is level along Commerce Lane and slopes steeply on the riverbank. Vegetation is natural to the site consisting of underbrush and a few mature trees on the riverbank with mowed lawn around the walk and street parking area. Invasive species present an ongoing challenge. Built amenities include a covered seating area, three wood river overlook decks, walkway lighting, an abandoned railroad trestle, and undesignated/unimproved fishing and kayak/canoe launch areas. Parallel parking is available on the adjacent Commerce Lane. The Park continues to provide well used access to the Kalamazoo River

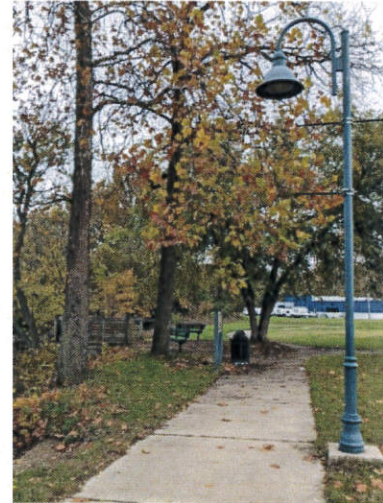
Amenities

- Concrete sidewalk
- Interpretive signage
- Two benches and trash receptacles
- Three river overlook decks - one with covered seating
- Wayfinding lighting
- Electrical service available on site
- Abandoned railroad trestle
- Undesignated canoe/kayak launch
- Parallel parking available



Accessibility

2-some of the facilities/park areas meet accessibility guidelines.





## City Hall Park

### Size and Location

.75-acres triangular shaped parcel bounded by the City Hall parking lot, Riverview Drive, and Shoppers Lane.

### Service Area

City of Parchment residents.

### Description/Overview

The Park is a .75-acre parcel of gently sloping land adjacent to the City Hall parking lot and bounded by Shoppers Lane on the west and Riverview Drive on the east. Several medium and large trees dot the open lawn area. The City of Parchment's entry sign monument is located at the south end. Electric is available at the site, as is a single picnic table. Parking is available at the City Hall parking lot as well as some on-street parking along Shoppers Lane. A future Veteran's Memorial plaza for which a community funding drive is currently underway is envisioned to be developed in this space.

### Accessibility

There are no facilities developed in the park.



## School Recreation Areas

Three of the six schools making up the Parchment School District are located within the city limits. When public school is not in session, Parchment residents can use the following school playgrounds and sports fields:

### Central Elementary School

Flat playing field  
Soccer field  
Two playgrounds with swings and climbing apparatus  
Paved parking available on-site

### Parchment Middle School

Flat playing field  
Paved parking available on-site

### Parchment High School

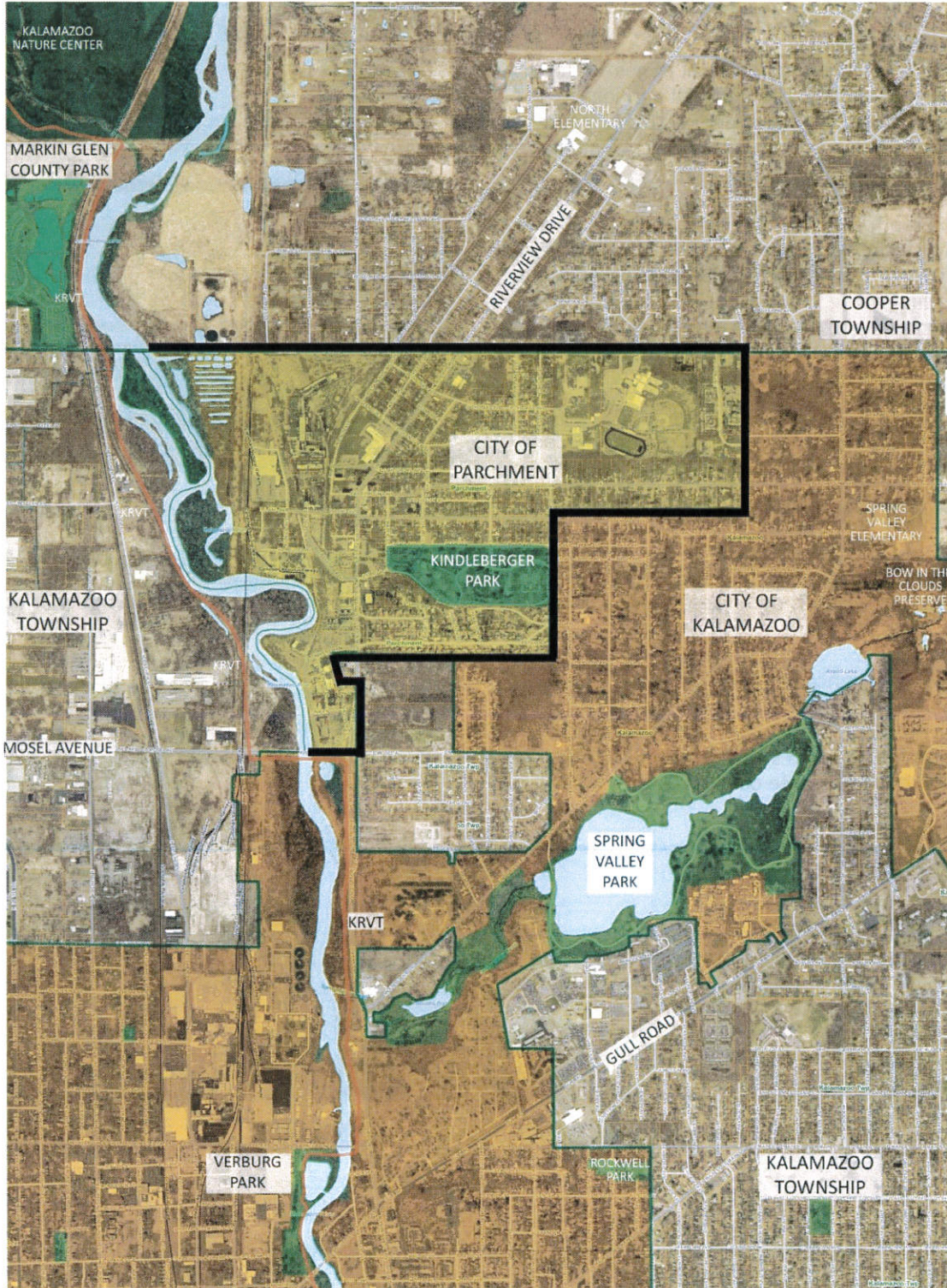
Football field with integral track, metal home and visitor bleachers  
One baseball and one softball field  
Soccer field  
Open practice field for sport activities and band use  
Batting cages  
Two concession and restroom buildings  
Drinking fountain



## Other Nearby Recreation Facilities

The map below illustrates the variety of outdoor recreation facilities located within close proximity to Parchment. The following pages describe these nearby facilities in greater detail.

Map 5. Recreation Facilities Near Parchment



## Trails

### Kalamazoo River Valley Trailway

As mentioned previously in this section, the Kalamazoo River Valley Trailway (KRVT) offers 17 miles of 12' wide asphalt trail. A stretch of trail connecting downtown Kalamazoo to D Avenue in Cooper Township brushes the southeast corner of the City of Parchment and offers non-motorized access to other local and regional recreation facilities such as Markin Glen County Park and the Kalamazoo Nature Center. Many trail users park along Commerce Lane adjacent to Parchment's Riverfront Park to use the trail.

One terminus of the trailway's network of routes connects to the eastern limit of the Kal-Haven Trail State Park on 10th Street in Oshtemo Township, providing seamless access to the City of South Haven and Lake Michigan to the west. Once completed, the trailway will include 35 miles of trail throughout Kalamazoo County, connecting Kalamazoo Township to Battle Creek's Linear Park in Calhoun County to the east. The trailway will eventually extend south to the Portage Creek Bicentennial Park Trail in the City of Portage as well.

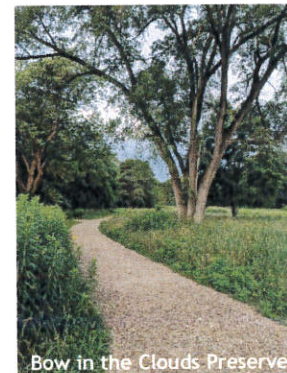
### Kal-Haven Trail State Park

Kal-Haven Trail State Park is a 35-mile linear park connecting the western trailhead near Lake Michigan in the City of South Haven to the eastern trailhead located on 10th Street in Oshtemo Township. A former railroad corridor, the Kal-Haven Trail is a crushed-limestone path that accommodates biking, hiking, equestrian recreation, and cross-country skiing and snowmobiling in the winter. The trailhead on 10th Street includes a parking lot, pit-toilets, benches, and a train caboos that serves as a small office and visitor center.

## Preserves

### Bow-in-the-Clouds Nature Preserve

Located west of Nazareth Road, the 60-acre preserve owned by the Southwest Michigan Land Conservancy is situated in portions of both Kalamazoo Township and the City of Kalamazoo. The preserve features trails through various types of upland, forest communities and boardwalk and bridges to allow walkers to traverse a wetland and stream. The preserve is contiguous to Averill Lake. The trails are within walking and bicycling distance of Parchment residents. A new parking lot has recently been added to provide greater access to the public.



### Glenn Allen Island

This 10-acre Southwest Michigan Land Conservancy island preserve in the Kalamazoo River is located in Kalamazoo Township and stretches along Parchment's riverfront from Island Avenue to G Avenue. Access is limited, but the preserve can be viewed from the Kalamazoo River Valley Trailway bridge located south of Markin Glen County Park and from the City of Parchment's Kalamazoo River and from the City of Parchment's undeveloped riverfront.

## Parks

### City of Kalamazoo Parks

The City of Kalamazoo has a large municipal parks and recreation department with over 35 facilities serving area residents. Facilities located near Parchment include the following:

- Spring Valley Park - This 226-acre park offers a variety of picnic areas, playground equipment, fields, tennis courts, a paved walking trail highlighting the identification of mature trees, and parking. This large open space is accessible to adjacent neighbors and neighborhoods as well as employees of commercial facilities along Gull Road south of the park. It also has several large parking areas allowing it to serve as a Community Park for a broader area of residents. With minor improvements, an existing trail running from the park west to Riverview Drive can provide access to the park from the Kalamazoo River Valley Trail.

- Rockwell Park - Located at 1106 Trimble, this 4.6-acre park features amenities for basketball, tennis, picnic tables, grills, playground equipment, and toilets.
- Verberg Park - Verberg Park is situated on the west side of the Kalamazoo River between Paterson Street and Gull Road. The park offers playground equipment, generous open space, a parking lot accessible off Paterson Street, and access to the Kalamazoo River and the Kalamazoo River Valley Trailway, which runs through the park. Reasonable accommodations for launching small watercraft are also available.
- Ver Sluis-Dickenson Softball Complex - This park is located off of Douglas Avenue and focuses on multiple softball fields. It also features open, grass fields, which are utilized for a variety of informal uses as well as the organized youth football teams and competitions by the Kalamazoo Ultimate Disc League.



### Kalamazoo County Parks

Kalamazoo County owns and operates six parks, two of which are within easy access of Parchment residents, as well as the Kalamazoo River Valley Trailway (KRVT). In addition to the previously described KRVT, Kalamazoo County Parks Department manages the following nearby facilities:

- Markin Glen County Park - Markin Glen Park straddles North Westnedge Avenue in Cooper Township, immediately north of Kalamazoo Township's Northwood neighborhood. The Kalamazoo River Valley Trailway and the Kalamazoo River make up the park's eastern boundary. Operated by the Kalamazoo County Parks Department since 1988, the park offers area residents barrier-free access to 160 acres of woodlands, meadows, and lakeshore. Amenities include fishing, camping, a swimming beach, tennis courts, picnic facilities, and an extensive system of trails. The Maple Hill Mountain Bike Trails, located on the west side of Westnedge Avenue, provide approximately 4.5 miles of mountain bike specific trails featuring many elevation transitions.
- Kalamazoo County Fairgrounds and Expo Center - Located in Kalamazoo Township's Lakewood neighborhood within a 10-minute drive from Parchment, the fairgrounds offer open space, paved roads for walking when events are not occurring, picnic facilities, and limited camping during specific events such as the county fair. A wide variety of indoor events occur at the center almost daily creating numerous recreation opportunities.

### Nature Centers

#### Kalamazoo Nature Center

The Nature Center is located on North Westnedge Avenue approximately three miles north of the City of Parchment and is one of the oldest nature centers in the United States. With 1,100 acres of protected open space, the Kalamazoo Nature Center offers opportunities for hiking, nature study, and interpretive programs for children and adults. The Nature Center is accessible via the Kalamazoo River Valley Trailway and offers free parking to trail users.

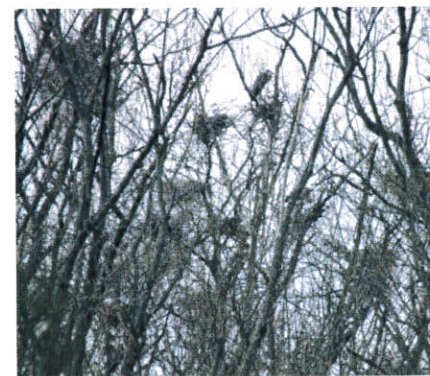
## CHAPTER 4: NATURAL RESOURCE INVENTORY

Because of its small size and well-developed residential, industrial, and commercial areas, there are few natural resources available for recreational use within the City of Parchment. There is, however, one very important exception. The Kalamazoo River forms Parchment's western boundary, so the community has a nearly mile-long undeveloped frontage on the Kalamazoo River that extends from Mosel Avenue on the south to G Avenue on the north.

In the early 1990s, with a grant from the DNR Natural Resources Trust Fund, the City developed Riverfront Park, a several-block-long linear park extending between Commerce Lane and the River. The park remains a highly visible, well-used access point on the river. The major expanse of Parchment's river frontage, however, extends north from Riverfront Park to G Avenue. This long stretch of the river has been shielded from public view and access by the multi-acre site of the former paper mills. As Riverfront Park developed in the 1990s, City officials hoped to extend the paved trail along Parchment's entire riverfront but were stymied in their efforts by the reluctance of mill-owners to provide public access. Today, with the exception of a twenty-acre parcel at the south end owned by Hercules, Inc., the City of Parchment controls the river frontage and a strip of second growth woods in 25-acre parcel east of the river.

Because of its isolation and difficulty of access, the riverfront in this long stretch is, with the exception of paper mill water outlets, undeveloped. The east bank of the river in this section faces the Southwest Michigan Land Conservancy's Allen Island Preserve. This low-lying island preserve divides the river for the entire length of Parchment's frontage. The north end of Parchment's frontage bordering G Avenue includes the paper industry "settling lagoon" and a small creek flowing into the river. On the west side of the river, directly across from Allen Island and the Parchment property, the Kalamazoo River Valley Trail extends north and south along the river floodplain.

In much of Parchment's river frontage, the riverbank is high and is dominated by second growth forest including typical floodplain trees. Sycamore, hackberry, silver and red maples, white and chestnut oaks, hickory, black cherry, box elder and cottonwoods are all present in this wooded area. Unfortunately, the understory is rife with invasive shrubbery including multiflora rose, honeysuckle, buckthorn, and autumn and Russian olive. The terrain at the southern end of the frontage is a much lower wetland bordering a river oxbow. A portion of this area, categorized as wetland falls into the 1% annual flood hazard category. A natural pond with outlet to the river is a conspicuous



Top: Parchment Riverfront Park  
Middle: Pond near Parchment's riverfront  
Bottom: Heron rookery visible from future riverfront trail

feature of this area. Large numbers of ducks typically congregate on this pond in autumn. This area is also home to a large and very active Great Blue Heron rookery bordering the river.

The varied topography and vegetation in this riverfront area make it a rich habitat for other bird species. Pileated and Red-bellied Woodpeckers are frequently sighted, eagles and osprey feed in the area, the river is home to wood ducks and other waterfowl, and songbirds like Baltimore Orioles, Carolina and Winter Wrens, Bluebirds and migratory warblers are often present. Wild turkeys are abundant. In the spring, the low areas along the River are breeding grounds for Spring Peepers and Swamp Chorus frogs. The numbers of snapping, soft shelled and painted turtles, once very common in this section of the river, seem to have declined from sediment build-up brought about by the opening of Morrow Dam. Mammals common to the region, including deer, beaver, muskrats, and squirrels, occur here.

While Parchment's riverfront offers an important refuge for wildlife and deserves protection for that reason alone, it also provides residents with an unprecedented view of the Kalamazoo as a wild river in the midst of an urban setting. As plans move forward to finally continue the Commerce Lane Riverfront Park with a hiking/biking trail that continues to G Avenue and connects to the Kalamazoo River Valley Trail, residents of Parchment and the region will be able to understand and appreciate the Kalamazoo River in an entirely new way.

Map 6. Parchment Riverfront Trail Master Plan (2020)



## CHAPTER 5: DESCRIPTION OF THE PLANNING PROCESS

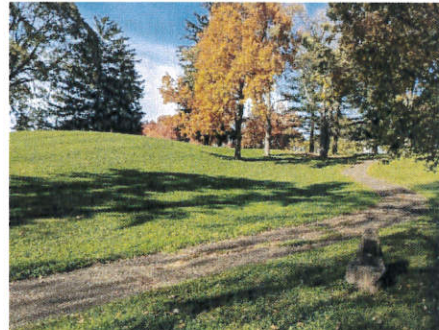
In early 2021, the Parchment City Commission assigned the task of updating the City's decades-old Recreational Plan to the City's five-member Planning Commission. Since the plan was last updated in 1997, the City of Parchment had experienced profound changes including the closure of the last paper mill in the City, a drastically reduced tax base, and an increasingly diverse population. As work on the Parks and Recreation Plan began, the Planning Commission examined two recent surveys of Parchment residents. In both cases, the surveys included much more than parks and recreation opinions and preferences, but both, in turn, revealed that Parchment residents valued their existing parks, were eager for park updates, and very interested in developing other recreational resources in the City.

The first survey, conducted in 2017 under the sponsorship of the Parchment Community Library, queried residents on their ideas for community development, engagement, events, facilities and services, and Kindleberger Park. The over 160 suggestions covered the range of community issues, but many indicated an interest in developing more resources in Kindleberger Park, developing Parchment's riverfront as a recreational asset, and encouraging community solidarity through more recreational programming.

The second survey, conducted in 2019 as part of Parchment's Master Plan development, asked specific questions about Kindleberger Park improvements and attitudes towards Parks and Recreation in the City. Respondents voiced strong support for improving restrooms in the Park and adding amenities like a splash pad and playground upgrades. They also indicated satisfaction with existing parks and recreation opportunities in the City, and some respondents voiced support for a recreational millage to enhance community resources.

Although not a survey, a third recent project, Envisioning Our River, also helped to shape thoughts about parks and recreation possibilities in Parchment community Supported by a grant from the Kalamazoo Community Foundation, Envisioning Our River brought together two groups of River stakeholders. The first group included government officials, area businesses, environmental organizations, recreational users, and neighborhood representatives. Parchment area residents comprised the second group of stakeholders, and at an April 2019 "visioning session", over forty attendees voiced interest in river projects such as a kayak launch, extending a hiking trail along Parchment's riverfront, and connecting area recreational assets through hiking and biking opportunities.

With this public input as a background, the Planning Commission used a number of research tools and strategies to measure current public opinion about existing and yet to be developed parks and recreation possibilities. These varied public input opportunities began in July 2021 and ended with a mail-in survey in October 2021. Because of covid restrictions, conducting indoor visioning sessions was problematic so the Planning Commission organized two outdoor sessions to solicit direct input from community members.



Top: Kindleberger Park Bottom: Future trail location on city-owned property

## CHAPTER 6: DESCRIPTION OF THE PUBLIC INPUT PROCESS

Opportunities for public input included:

- **July 10, 2021—Kindleberger Summer Festival information booth.** Planning Commission members manned an information table with illustrations and maps of current and proposed recreation projects in the City. Several thousand people attend this annual event, and a number of community members ranging in age, stopped by to talk with Planning Commission members and articulate their suggestions for needed improvements.
- **July 20-September 20, 2021—Suggestion box located in the Parchment Community Library.** The suggestion box was placed in a prominent position, but limited Library traffic due to covid concerns curtailed responses.
- **September 15, 2021—“Let’s Talk Parks” event in Kindleberger Park.** Community members were invited through social media, websites, and signage to attend a visioning session that included an ice cream social and picnic. Planning Commission members set the context for the session, described current suggestions for park development, and then engaged in discussion with attendees. Over thirty participants ranging in age from children to senior citizens and including both new residents and those who had lived in the community for many years attended the event. (See Appendix for a summary of citizen comments received during these events.
- **September-October 2021—Mailed Parks and Recreation survey to Parchment’s 715 households.** Over seventy-five residents responded, a nearly 10% return rate. Most respondents were older, long-established Parchment residents, but several young families and newer community residents also shared their ideas and priorities. (See Appendix for a survey sample and compilation of responses.
- **December 2021.** The Parks and Recreation Plan draft was available at the Parchment Community Library, at City Hall, and on the City’s website for a thirty-day viewing and comment period. Public notification of the draft availability included in Appendix. Public comments were submitted in a Library suggestions box and at the City of Parchment website. A public hearing on the draft Parks and Recreation Plan took place at the regularly scheduled December Planning Commission meeting held virtually due to covid-related restrictions.



From top: Information booth at Kindleberger Festival, suggestion box at Parchment Community Library, “Let’s Talk Parks” event

From these varied input sessions, a number of Parks and Recreation themes emerged:



- Parchment residents are deeply attached to Kindleberger Park and the resources it offers the community. Many emphasized the need to maintain and update Park facilities, and noted the need to enhance Park security, especially at night.
- Kindleberger Park was also central to ideas involving more community events that drew residents into a common space and into interaction with neighbors and friends.
- A number of respondents recognized the Kalamazoo River as an untapped resource for the City, and mentioned the development of a water trail, kayak launches, and hiking and biking trails as important opportunities for development.
- Some respondents, noting the declining condition of trees in Kindleberger Park and along City streets urged the development of a tree replacement plan for the entire City.
- A number of respondents commented on the former mill property as an eyesore for the City and urged its removal as quickly as possible. Others suggested that the mill site might, at least in part, offer opportunity for recreational development.
- Some comments focused on enhancing the City’s “walkability” with the installation of more benches, waste receptacles, trail development, and “pop-up” picnic areas dispersed through the City.
- A number of commentators had specific suggestions including a dog park, skate park, ice rink, additional pickle ball courts, and a splash pad.
- While some respondents expressed concern about high taxes, others recognized the financial limitations that the City faces and offered suggestions ranging from a dedicated parks and recreation millage to increasing volunteer assistance in maintaining public spaces.

For a complete listing of citizen comments, please see Appendix.



Left: Picnic shelters at Kindleberger Park  
 Upper right: Pond near Parchment's riverfront  
 Lower right: Parchment Mill Redevelopment Site

## CHAPTER 7: GOALS AND OBJECTIVES

Drawing on the recreation inventory and public input gathered through surveys, in-person events, and a suggestion box located in the Community Library, the Parchment Planning Commission on behalf of the City of Parchment has articulated the following goals and objectives to guide the development and management of Parchment's recreation resources over the next five years.

The goals, broad in nature, are designed to create a flexible framework for decision-making while considering both the community's unique history and the need to construct an economically and environmentally sustainable future benefiting all Parchment residents. The objectives, listed under each goal, suggest more specific projects to be undertaken as needs and opportunities arise between 2022 and 2027.

**G1. Maintain and enhance existing recreational facilities to provide accessible, safe, and diverse recreational experiences for all city residents.**

- Develop an integrated tree enhancement and replacement program that involves the entire City including Kindleberger Park.
- Upgrade all facilities in Kindleberger Park including (but not limited to) public restrooms, the paved trail system, and the Park's electrical grid.
- Evaluate all playground areas for safety and accessibility and upgrade as needed.



The sunken garden gazebo and pickleball courts in Kindleberger Park

**G2. Improve and develop underused areas and resources, with particular emphasis on public access to the Kalamazoo River.**

- Develop Parchment's riverfront area as a natural and recreational asset for the city.
- Consider innovative ways to integrate portions of the former mill property into both active and passive recreational opportunities.
- Develop underused park areas including Devon Park and City Hall Park in ways that add diversity to recreational experiences in Parchment
- Develop facilities for non-motorized transportation that include the entire City
- Develop public awareness of Parchment's unique history as a model community and model paper mill through the development of a non-motorized "paper trail"

**G3. Encourage Parchment citizens to engage in the development and upkeep of the City's Parks and Recreational facilities and programs.**

- Encourage public programming in the parks
- Increase community awareness of and participation in established volunteer groups like the Parchment CCC (Community Clean-up Crew), Kindleberger Festival committees or the annual community Wassailing event.
- Create new opportunities for community volunteer involvement in specific projects such as the river trail, development of kayak launches, or picnic site monitoring.
- Create a volunteer Parchment Park and Recreation Commission to coordinate decisions related to the City's recreational resources.

**G4. Develop partnerships and joint recreational ventures with community organizations and other regional entities including local governments and non-profit organizations.**

- Work with local groups and organizations to support, develop, and maintain parks and recreational facilities.
- Cooperate with the Parchment School District to encourage innovative student involvement in the planning, development and oversight of parks and recreation programs.
- Encourage cooperation between the City of Parchment and other local governmental units to develop and enhance regional park and recreational opportunities including the Kalamazoo River Valley Trail, Markin Glen and Spring Valley Parks, and nearby Southwest Michigan Land Conservancy preserves.
- Provide leadership in the on-going development of the Urban Wildlife Corridor, a project funded by the Kalamazoo River Trustees and undertaken with other regional Kalamazoo River Stakeholders.



The old railroad trestle over the Kalamazoo River, located at the north end of Riverfront Park

**G5. Make fiscally responsible and environmentally sound choices in all decisions involving parks and recreational facilities and programs.**

- Consider long term cost of maintenance and operation in purchasing decisions and in designing new recreation facilities
- Seek diverse grant funding opportunities to support parks and recreational capital improvement projects
- Develop options for long-term financial and programmatic support for parks and recreation staffing needs
- Reduce routine mowing by developing environmentally sound pollinator-friendly plantings in selected City owned properties.

## CHAPTER 8: ACTION PLAN

The Goals and Objectives, drawn from community input and articulated in the previous section, form the basis of Parchment's Action Plan. Action Plan items address ways to enhance Parchment's parks and recreation programs, but also reflect a realistic appraisal of what this community, with its limited staffing and financial resources, can accomplish beginning in 2022 and extending over the next five years. Progress on these action items will require concerted effort from the entire community including elected officials, City staff, Planning Commission members, and other community volunteers. Parchment's long tradition of community dedication and activism will be an important factor in the success of the Action Plan.

### Action A

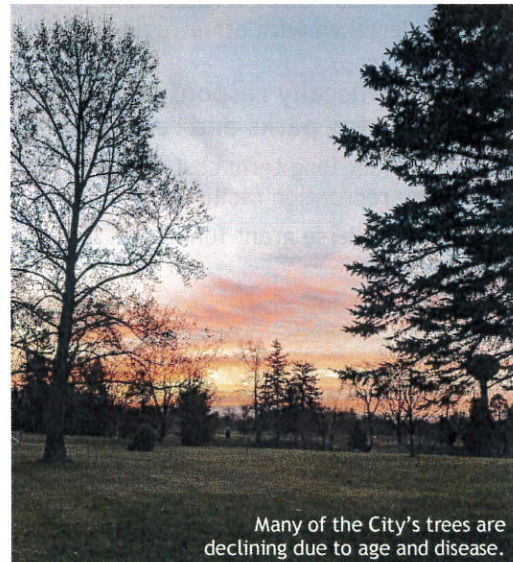
Community input indicated overwhelming support for upgrading facilities in Kindleberger Park. Kindleberger Park improvements will, at least in part, depend on the City's ability to tap available funding sources. Upgrades include:

- Increase accessibility of Park resources for all community members.
- Address issues of Park safety especially in the overnight hours.
- Evaluate and improve playground areas as needed.
- Improve and update restroom facilities.
- Evaluate Park trail system to remove redundant trails and repave remaining trails.
- Improve the Park's electrical grid to accommodate new program usage.
- Construct a small storage facility near the Kindleberger stage for performance equipment.
- Identify and apply to appropriate outside funding sources for Park capital improvements.
- Investigate a dedicated millage for Park improvements.

### Action B

Develop a city-wide tree evaluation, replacement, and maintenance program. Varied tree species in Kindleberger Park, along City streets, and in the yards of individual homeowners are, due to age and disease, in significant decline. Public input indicated a strong interest in understanding and addressing the current problems of tree culture. Action items include:

- Develop a city-wide tree planting and maintenance program.
- Hire professional arborists to prune Kindleberger Park trees and remove diseased or dying trees.
- Seek outside funding source to support plan development and tree planting.



Many of the City's trees are declining due to age and disease.

### Action C

Develop Parchment's riverfront as a recreational, educational, and environmental asset for the City. Parchment has recently received two grants from the Kalamazoo River Trustees. The first involves improvements to Riverfront Park along Commerce Lane including riverbank restoration, the partial removal of the railroad trestle, and the construction of an observation platform and kayak launch area. The second grant, in cooperation with other River stakeholders, will establish an Urban Wildlife Corridor extending from Kalamazoo, through Parchment, to D Avenue in Cooper Township. This grant support, along with public interest in the Kalamazoo River as a community asset, provides a firm basis for the following action items:

- Upgrade and repair existing overlooks in Riverfront Park.
- Continue to develop the Commerce Lane and Urban Wildlife Corridor projects.
- Protect Parchment's riverfront as an important natural and recreational asset for the City.
- Develop a non-motorized trail extending along the Kalamazoo River from Commerce Lane to G Avenue. This project includes securing all rights-of-way, trail design, and securing funds for trail development.
- Work with Kalamazoo County Parks to integrate the Parchment river trail into the existing Kalamazoo River Valley Trail system.
- Develop the interpretive components of the trail to include both the riverine environment and the history of the local paper industry. The trail pathway includes the Parchment community and Kindleberger Park.
- Coordinate with other regional entities for the development of a water trail that includes several kayak launches in the Parchment area.

### Action D

Develop facilities for non-motorized transport in the City of Parchment. Action items include:

- Evaluate the condition of all sidewalks and upgrade as needed.
- Expand the system of benches and waste receptacles in appropriate areas to encourage pedestrian traffic.
- Institute bike lanes throughout the City.
- Designate and maintain (by snow removal), a "winter walkway" that provides safe pedestrian access to designated areas during winter months.
- Investigate non-motorized trail funding in support of these projects.

### Action E

Develop new and existing but underused park areas within the City. Action items include:

- Develop new uses for Devon Park and City Hall Park.
- Institute a system of "pocket picnic spots" in appropriate areas throughout the City.
- Evaluate portions of the KVP mill property for new recreational uses such as a dog park, splash pad area, or a skate park.
- Integrate Parchment's unique history as a "model community" into interpreted recreational opportunities such as a "paper trail" or walking tours of the City available electronically. Partner with the Parchment Community Library for content development.
- Re-plant Bellisle Boulevard as the City's first pollinator pathway. Partner with local organizations like Wild Ones, SWMLC, and the Kalamazoo Audubon Society for shared expertise and volunteer contributions.

## Action F

Increase community activism and support of parks and recreation needs and opportunities within the City. Action items include:

- Support the Parchment Community Library in its annual Parchment Community Day.
- Partner with Parchment schools to encourage student volunteerism in recreation programs.
- Promote current volunteer opportunities like the Parchment CCC (Community Clean-Up Crew).
- Develop a volunteer group to engage in planning and maintaining the river trail.
- Encourage interaction and mutual support among existing volunteer groups in the community.
- Create a volunteer Parchment Parks and Recreation Commission to act as a clearing house for volunteer projects.
- Consider ways to increase staff devoted to parks and recreation programs within the City.



Volunteers from Parchment's CCC spend a Saturday morning cleaning up invasive plant species, leaves, and trash at Riverfront Park

## Action G

Continue and expand cooperative parks and recreation activities with other regional entities. Action items include:

- Cooperate with regional entities like Kalamazoo County Parks, the City of Kalamazoo, and Cooper Township to coordinate accessible kayak launching areas.
- Cooperate with the Kalamazoo River Valley Trail to integrate Parchment resources into current trail signage.
- Cooperate with regional environmental organizations like the Kalamazoo Nature Center and Kalamazoo Audubon to develop an accessible birding trail along the Kalamazoo River.
- Work with local governments, educational institutions, and environmental organizations to develop a training program for youth in environmental remediation practices, grounds maintenance and horticultural practices.
- Provide active oversight for the continued development of the Urban Wildlife Corridor.

## CHAPTER 9: POST-COMPLETION SELF- CERTIFICATION REPORT



The DNR Michigan Natural Resources Trust Fund logo is displayed in a cast stone plaque mounted on the covered overlook seating area at Parchment Riverfront Park.





Michigan Department of Natural Resources - Grants Management

**PUBLIC OUTDOOR RECREATION GRANT  
POST-COMPLETION SELF-CERTIFICATION REPORT**

*This information required under authority of Part 19, PA 451 of 1994, as amended;  
the Land and Water Conservation Fund Act of 1965, 78 Stat. 897 (1964); and Part 715, of PA 451 of 1994,  
as amended.*

**GRANT TYPE:** (Please select one)

MICHIGAN NATURAL RESOURCES TRUST FUND  CLEAN

MICHIGAN INITIATIVE

LAND AND WATER CONSERVATION FUND

RECREATION PASSPORT  BOND FUND

**GRANTEE:** City of Parchment

**PROJECT** 91-343 **PROJECT** Development

**PROJECT** Riverfront Park Development

New overlook decks, gazebo, benches and litter

**PROJECT** receptacles.

**TO BE COMPLETED BY LOCAL GOVERNMENT AGENCY (GRANTEE)**

Name of Agency (Grantee) <u>City of Parchment</u>	Contact Person <u>Shannon Stutz</u>	Title <u>Treasurer/Clerk</u>
Address <u>650 S. Riverview Drive</u>	Telephone <u>269-492-3262</u>	
City, State, ZIP <u>Parchment, MI 49004</u>	Email <u>finance@parchment.org</u>	

**SITE DEVELOPMENT**

Any change(s) in the facility type, site layout, or recreation activities provided?  Yes  No  
If yes, please describe change(s). \_\_\_\_\_

---

Has any portion of the project site been converted to a use other than outdoor recreation? If yes, please describe what portion and describe use. (This would include cell towers and any non-recreation buildings.)  Yes  No  
\_\_\_\_\_

---

Are any of the facilities obsolete? If yes, please explain.  Yes  No  
\_\_\_\_\_

**SITE QUALITY**

Is there a park entry sign which identifies the property or facility as a public recreation area?  Yes  No  
If yes, please provide a photograph of the sign. If no, please explain.  
The park is located along a public street with parking, so no formal entry exists.



Are the facilities and the site being properly maintained? If no, please explain.  Yes  No  
They are being maintained but are aging.

Is vandalism a problem at this site? If yes, explain the measures being taken to prevent or minimize vandalism.  Yes  No

Is maintenance scheduled on a regular basis? If yes, give schedule. If no, please explain.  Yes  No  
Trash containers are emptied weekly through a contracted waste disposal service.  
Public Works employees check the condition of benches and the overlook decks.

**GENERAL**

Is a Program Recognition plaque permanently displayed at the site? If yes, please provide a photograph. (Not required for Bond Fund Grants)  Yes  No  N/A

Is any segment of the general public restricted from using the site or facilities? (i.e. resident only, league only, boaters only, etc.) If yes, please explain.  Yes  No

Is a fee charged for use of the site or facilities? If yes, please provide fee structure.  Yes  No

What are the hours and seasons for availability of the site?  
The park is open at all times as it is accessible from the public street.

**COMMENTS (ATTACH SEPARATE SHEET IF MORE SPACE IS NEEDED)**

**CERTIFICATION**

*I do hereby certify that I am duly elected, appointed and/or authorized by the Grantee named above and that the information and answers provided herein are true and accurate to the best of my personal knowledge, information and belief.*

Shannon Stutz

Please print

\_\_\_\_\_  
*Grantee Authorized Signature*

\_\_\_\_\_  
Date

Nancy Stoddard

Please print

\_\_\_\_\_  
*Witness Signature*

\_\_\_\_\_  
Date

**Send completed report to: POST COMPLETION GRANT INSPECTION REPORTS  
GRANTS MANAGEMENT  
MICHIGAN DEPARTMENT OF NATURAL RESOURCES  
PO BOX 30425  
LANSING MI 48909-7925**

## APPENDIX: PUBLIC INPUT MATERIALS

### STILL NEEDED:

- Kindleberger Festival Sign-In Sheet
- Let's Talk Parks Sign-In Sheet
- Notice of public hearing
- Minutes of public hearing
- Minutes from meeting to pass resolution
- Transmittal letters to county etc. planning agencies
- Resolution adopting

# City of Parchment Parks and Recreation Master Plan

## Kindleberger Festival Display Table – July 10, 2021

Large map of City with surrounding context showing adjacent parks and recreation areas

Large map of City with all parks highlighted in green

Large poster describing what we are doing and why

Large poster with lists of possible park improvements with sticky dots to put alongside ideas on the list that they like

- All participants get three dots
- Can bring multiple copies of sheets in case they fill up quickly

Printed copies of surveys / pencils/pens

Could also showcase:

- Community master plan
- River partners project descriptions
- Preliminary riverfront trail map

### Set-up:

---

Clip plans and images to boards and display them on easels.

- Tent for shade
- Minimum of two tables, maximum of four, and a few chairs for those working
- 100 printed copies of the survey (ideally have one box for blank surveys and one for completed surveys)

Planning commissioners should plan to be at the table for at least three hours on staggered shifts between 9 am and 3 pm to answer questions, hand out dots and pencils to participants, and collect completed surveys.

### CITY OF PARCHMENT PARKS AND RECREATION MASTER PLAN

The City of Parchment Planning Commission is starting the process of developing a Community Park and Recreation Master Plan.

The intent of a community park and recreation plan is to create an inventory of existing facilities and resources, identify community recreation and open space needs, and set a plan of action for a five-year period.

The Michigan Department of Natural Resources (DNR) provides financial assistance to communities through its grant programs. A current DNR-approved community park and recreation master plan is required to be eligible for grants from the Land and Water Conservation Fund and Michigan Natural Resources Trust Fund.

These grants can be used for the development of public outdoor recreation facilities and the acquisition of land for public recreation and for protection of land for environmental importance or scenic beauty.

**WE NEED YOUR INPUT!**

## Let's Palaver (talk that is) about Parks!

It's time to update Parchment's Parks and Recreation Plan, and your Planning Commission wants to hear from you.

What recreational opportunities would you like to see in our community?  
New kayak launches and hiking/biking trails along the Kalamazoo River?  
Update Kindleberger Park facilities?

Use portions of the mill property for new recreational opportunities?  
How about Devon Park or City Hall Park? Other ideas?

Jot down your ideas on the slip provided here.

We'll compile your suggestions and use them to help us think creatively about how to make our parks and recreational opportunities an important part of Parchment's sustainable future.

### CITY OF PARCHMENT PARKS AND RECREATION MASTER PLAN

Outdoor Fitness	Road Bicycling
Running/jogging	Roller skating/Blading
Skate Park	Hiking/Walking
Dog Park	Playground Improvements
Football	Picnicking
Soccer	Nature Play
Baseball/Softball	Natural Area Stewardship
Tennis	Gardening
Pickle Ball	Canoeing/kayaking
Volleyball	Fishing
Basketball	H2O Zone
Disc golf	Ice Skating

**WE NEED YOUR INPUT!**



**CITY OF PARCHMENT  
and Surrounding Communities**



**CITY OF PARCHMENT  
Parks, Schools, and Open Space**

City of Parchment Parks and Recreation Master Plan  
Kindleberger Festival Sign-in Sheet

# City of Parchment Parks and Recreation Master Plan

## Palaver About Parks Suggestion Box and Input Received

**Palaver about Parks**

My favorite idea for Parchment's parks and recreational opportunities is:

Contact information (not required)

Name:  
Email:  
Phone:

---

**Palaver about Parks**

My favorite idea for Parchment's parks and recreational opportunities is:

Contact information (not required)

Name:  
Email:  
Phone:

---

**Palaver about Parks**

My favorite idea for Parchment's parks and recreational opportunities is:

Contact information (not required)

Name:  
Email:  
Phone:

# City of Parchment Parks and Recreation Master Plan

## Let's Talk Parks Event – September 16, 2021

- 5:50 – 6:05 or 6:10 - Refreshments and conversation--As participants sign in and get refreshments they are directed to list of ideas to review and add others. write new ideas on a flip chart.
- Introduction to the PC--Kent--PC members introducing themselves and how long they've lived in Parchment.
- Why We're Here—
  - **Why we're doing the master plan** – if have a plan meeting all requirements on file with the DNR will be eligible to apply for state grant funding
  - **The process** – Inventory existing facilities, evaluate NRPA recommendations, engage citizens to develop goals and objectives and an action plan, write the plan, undergo required reviews and approvals by citizens and the city commission, upload plan by February 1.
  - **What we have done so far** – inventoried facilities, obtained input at the Kindleberger Festival, started developing goals and objectives based on old Parchment plan and the plans of similarly-sized communities, conducting this event to discuss goals and objectives with citizens and develop the action plan items.
- Proposed Goals and Objectives – 10 minutes -Go through the goals and objectives (with just goals on a big board to guide the discussion) and stress the importance of a realistic, attainable action plan.
- Action Plan Priorities –15 minutes –PC members hand out list of all suggestions received so far; participants (including children) receive instructions to choose and their top three on the list of ideas.
- Discussion of current suggestions; audience can add new ideas.
- If the group wants to mill around and talk or starts to break up then PC members engage in conversations as possible with individuals and small groups.

### CITY OF PARCHMENT PARKS AND RECREATION MASTER PLAN

The City of Parchment Planning Commission is starting the process of developing a Community Park and Recreation Master Plan.

The intent of a community park and recreation plan is to create an inventory of existing facilities and resources, identify community recreation and open space needs, and set a plan of action for a five-year period.

The Michigan Department of Natural Resources (DNR) provides financial assistance to communities through its grant programs. A current DNR-approved community park and recreation master plan is required to be eligible for grants from the Land and Water Conservation Fund and Michigan Natural Resources Trust Fund.

These grants can be used for the development of public outdoor recreation facilities and the acquisition of land for public recreation and for protection of land for environmental importance or scenic beauty.

**WE NEED YOUR INPUT!**



## GENERAL GOALS

- G1. Maintain and enhance existing recreational facilities to provide accessible, safe, and diverse recreational experiences for all city residents.
- G2. Preserve and/or improve historic, natural, scenic, and environmentally sensitive areas for habitat protection and appropriate public use and enjoyment.
- G3. Make responsible fiscal decisions in developing parks and recreational facilities and programs.

## COMMUNITY ENGAGEMENT GOALS

- CE1. Develop innovative strategies encouraging Parchment citizens to engage in the development and upkeep of the City's Parks and Recreational facilities and programs.
- CE2. Encourage community partnerships and joint ventures.
- CE3. Encourage community programming.

## PROJECT DEVELOPMENT GOALS

- PD1. Improve and develop underused areas.
- PD2. Develop facilities for non-motorized transportation that include the entire City



**CITY OF PARCHMENT  
and Surrounding Communit**



**CITY OF PARCHMENT  
Parks, Schools, and Open Space**

City of Parchment Parks and Recreation Master Plan  
Let's Talk Parks Sign-in Sheet

# City of Parchment Parks and Recreation Master Plan

## Let's Talk Parks Survey Results

Numbers in bold represent the number of participants who selected that idea as a priority.

### GENERAL GOALS

More pickleball courts  
More benches in Kindleberger Park  
More lights in Kindleberger Park  
Keep planting flowers  
Repave Kindleberger park walkways --**2**  
Update restrooms in Kindleberger Park--**5**  
Improve electrical capabilities in Kindleberger Park  
Fix shelters in Kindleberger Park--**2**  
Replace outdated play equipment in Kindleberger Park  
Develop tree replacement plans for all parks--**5**  
Find funding sources to support increased staffing for Public Works

### COMMUNITY ENGAGEMENT GOALS

Encourage community involvement in parks and recreation programs and upkeep--**2**  
Explore creation of a grounds/horticulture internship training program to assist in Parks and Recreation upkeep--**1**  
Develop new community events using the parks--**2**  
Include Parchment Schools and students in planning new parks and recreation opportunities

### PROJECT DEVELOPMENT GOALS

Develop a pollinator pathway (native plants) along Bellisle Blvd.--**2**  
Develop an initial birding trail" pathway along the river  
Designate areas in the city as small picnic areas--**3**  
Develop a hiking/biking trail along Parchment's riverfront to connect with the KRVT--**5**  
Use portion of mill property for recreation purposes--**1**  
Exercise stations in Kindleberger Park  
Move green streetlights from Riverview Drive to Kindleberger Park  
Soccer field, disc golf--**1**  
Splash pad (3 from previous input)  
Build structure behind stage to house equipment--**1**  
Kayak launch, observation platforms, and bank restoration along Commerce Lane--**3**  
Designate areas where bike lanes are needed  
Consider appropriate placement of benches to encourage walking pathways in the city  
Consider cooperating with other "paper" communities in a unified strategy to interpret the paper industry

Additional ideas added as written comments:

- Skate park (suggested by 3 children )
- Art show for new artists
- If dog park and splash pad are developed they **should not be** in Kindleberger Park
- Improve public safety at night
- In-line hockey rink or ice rink
- Handicap bathrooms accessible from picnic shelters

# Parks and Recreation Master Plan Survey

Please return to Parchment City Hall at 650 S Riverview Drive by October 1, 2021, drop box available.

1. How long have you lived in Parchment?

- Less than two years       6-10 years       More than 20 yrs  
 3-5 years       11-20 years       All my life

2. Regarding the current Parchment park system (including Kindleberger Park, Riverfront Park, Devon Park, City

Hall Park and all Parchment School Park facilities) Please mark the line that best reflects your opinion to the following

statements:

	Strongly Agree	Slightly Agree	Neither Agree/Disagree	Slightly Disagree	Strongly Disagree
Buildings in the Park are well maintained	___	___	___	___	___
Grounds/landscaping are mowed/cared for	___	___	___	___	___
Adequate signage for Directions/information	___	___	___	___	___
Grounds are free of trash, receptacles are emptied	___	___	___	___	___
I feel safe when using the park	___	___	___	___	___
Parks are secure at night	___	___	___	___	___
Playgrounds are safe and well maintained	___	___	___	___	___
Adequate picnic shelters that are well maintained	___	___	___	___	___

3. Within the last 12 months how often have you used a Parchment park facility?

- Once or twice       Monthly       Multiple times a week  
 3-6 times       Weekly       Daily

4. Within the last 12 months, how often have you used a different park facility outside of Parchment but within Kalamazoo County?

- Once or twice       Monthly       Multiple times a week

5. What should the City of Parchment focus on as a priority for future implementation?

- Acquiring land for future park development or preservation
- Developing and improving existing facilities
- Natural area preservation and conservation efforts
- New paved trails for walking, running, and biking
- Develop Parchment's riverfront as a recreation and environmental asset with new nature trails for hiking/recreation
- Develop access points for water trail (via Kalamazoo River)
- Other (please specify)

6. Which of the following activities do you currently engage in or would like to engage in as a user of

Parchment's park

facilities? (Please choose 5)

- |  |  |   |
|--|--|---|
| <input type="checkbox"/> Canoeing/Kayaking     | <input type="checkbox"/> Fishing           | <input type="checkbox"/> Gardening                |
| <input type="checkbox"/> Outdoor Fitness       | <input type="checkbox"/> Running/Jogging   | <input type="checkbox"/> Skate Park               |
| <input type="checkbox"/> Soccer                | <input type="checkbox"/> Baseball          | <input type="checkbox"/> Road Bicycling           |
| <input type="checkbox"/> Disc Golf             | <input type="checkbox"/> Hiking/Walking    | <input type="checkbox"/> Natural area stewardship |
| <input type="checkbox"/> Playgrounds           | <input type="checkbox"/> Softball/Baseball | <input type="checkbox"/> Roller Skating/Blading   |
| <input type="checkbox"/> Tennis                | <input type="checkbox"/> Pickleball        | <input type="checkbox"/> Volleyball               |
| <input type="checkbox"/> Basketball            | <input type="checkbox"/> Nature play area  | <input type="checkbox"/> Dog Park                 |
| <input type="checkbox"/> Football              | <input type="checkbox"/> Picnicking        | <input type="checkbox"/> Sledding                 |
| <input type="checkbox"/> Other (specify) _____ |  | <input type="checkbox"/> None of the above        |

7. Should portions of the former mill property be developed for recreational use?

- Yes  No

8. Among the many City amenities, how important are parks and recreational opportunities to the quality of life in the

City? (Circle area on the scale)



9. How would you be willing to support park improvements?

- |  |   |
|--|---|
| <input type="checkbox"/> Donation of time for park maintenance   | <input type="checkbox"/> Donation of money for park improvements  |
| <input type="checkbox"/> Participate in fundraising event for parks  | <input type="checkbox"/> Volunteer in fundraising event for parks |
| <input type="checkbox"/> Participate in a Parks and Recreation commission to advise the City on matters concerning parks |   |
| <input type="checkbox"/> I would not support park improvements   |   |
| <input type="checkbox"/> Other   |   |

(specify) \_\_\_\_\_

10. Would you support a dedicated millage to maintain/improve the City parks?

- Yes  No

11. How old are you?

- 17 or younger  18-29  30-49  50-65  65 or older

12. How old are the children living in your household? (Select all that apply)

- 2 years and under  3-5 years  6- 9 years  10-13 years  14-17 years

13. Are there any additional comments regarding Parchment's parks and recreational resources that you would like to share with the City of Parchment?

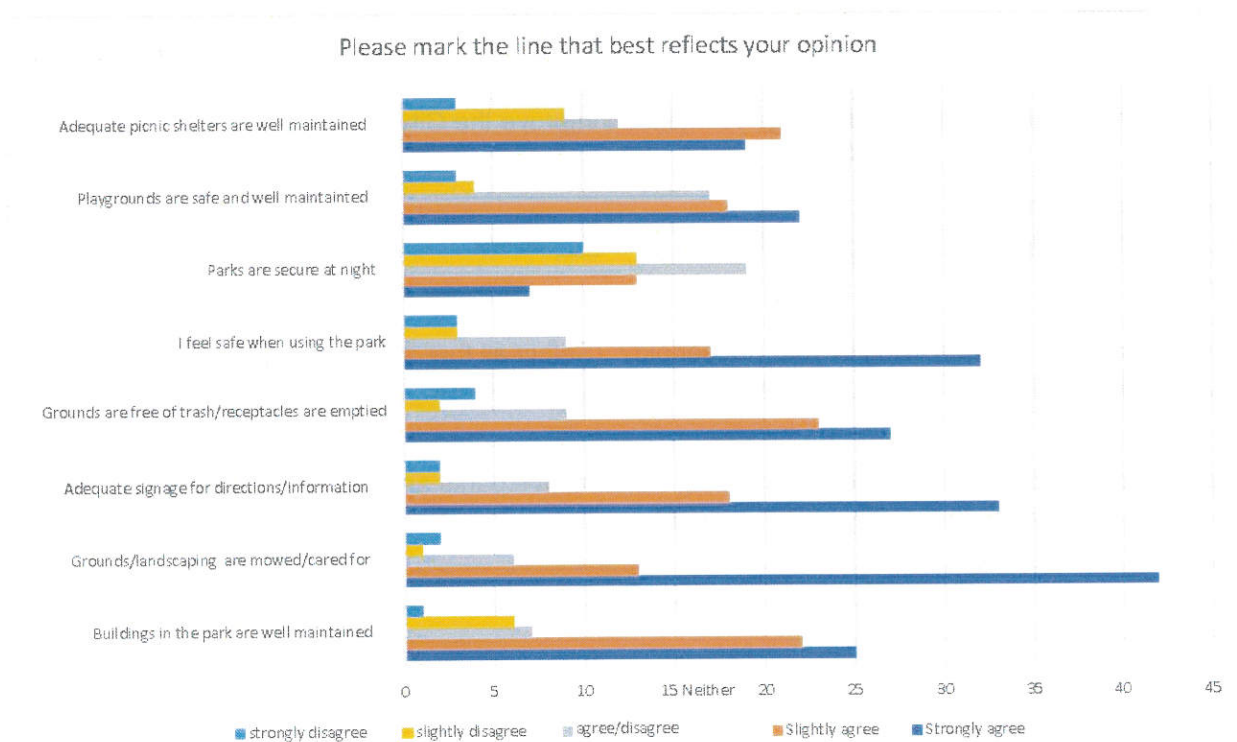
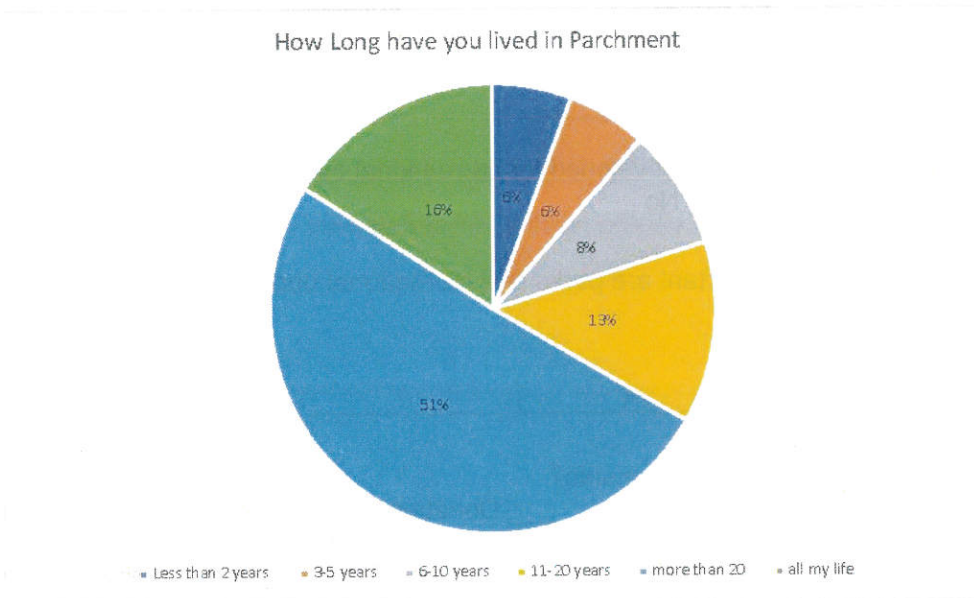
\_\_\_\_\_

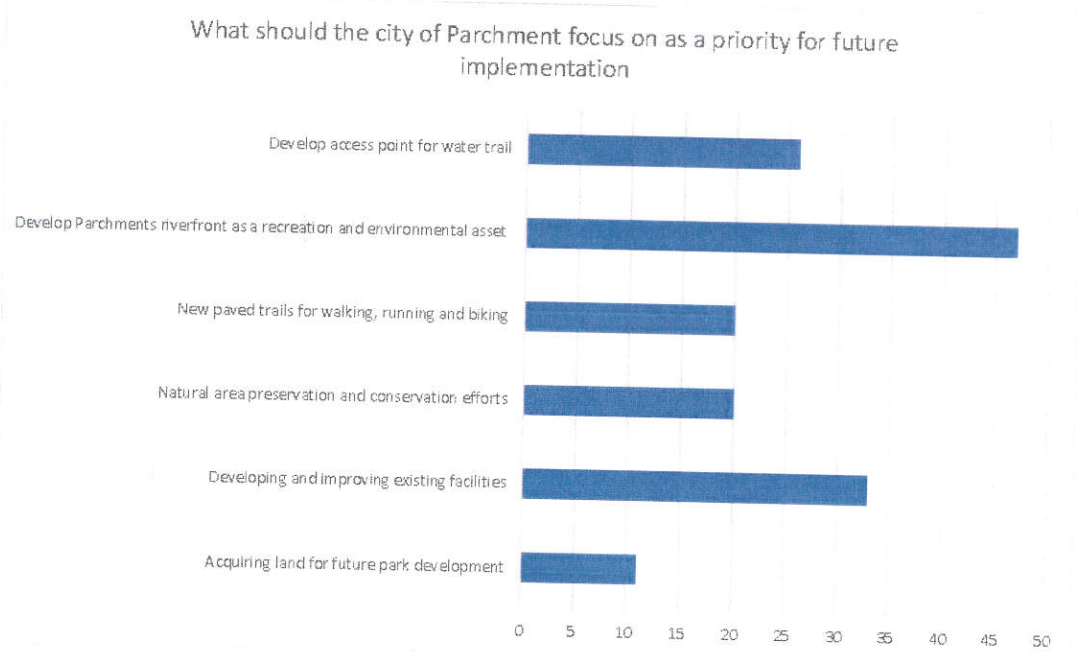
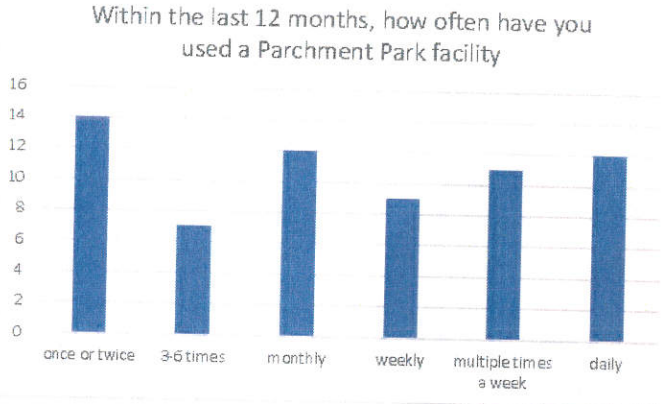
\_\_\_\_\_

\_\_\_\_\_

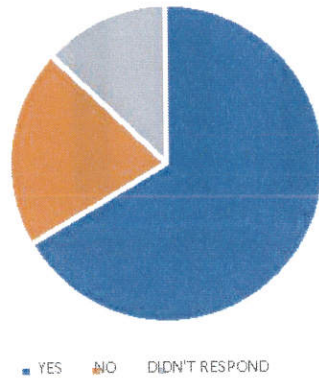
\_\_\_\_\_

# City of Parchment Parks and Recreation Master Plan Survey Results

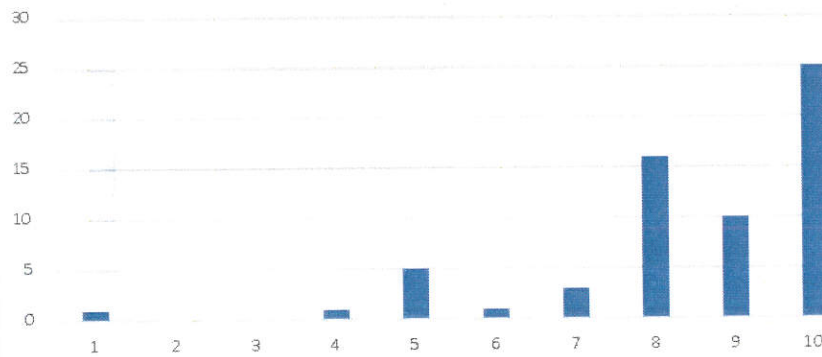




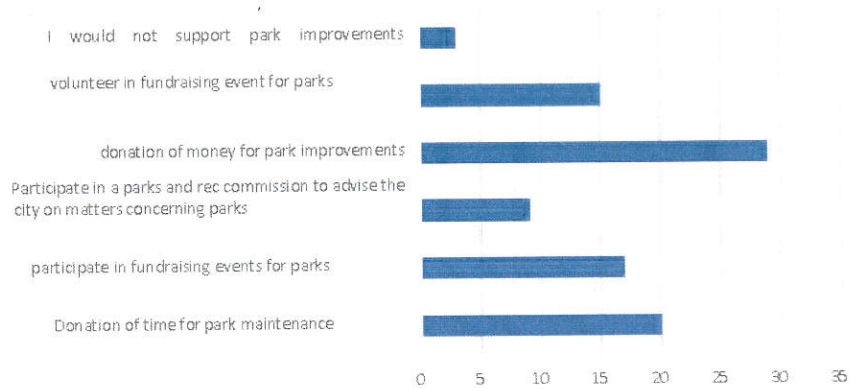
Should portions of the former mill property be developed for recreational use



Among the many city amenities, how important are parks and recreational opportunities to the quality of life in the city?

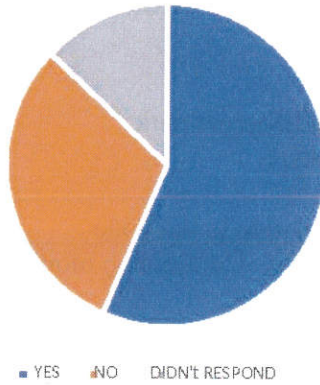


How would you be willing to support park improvements

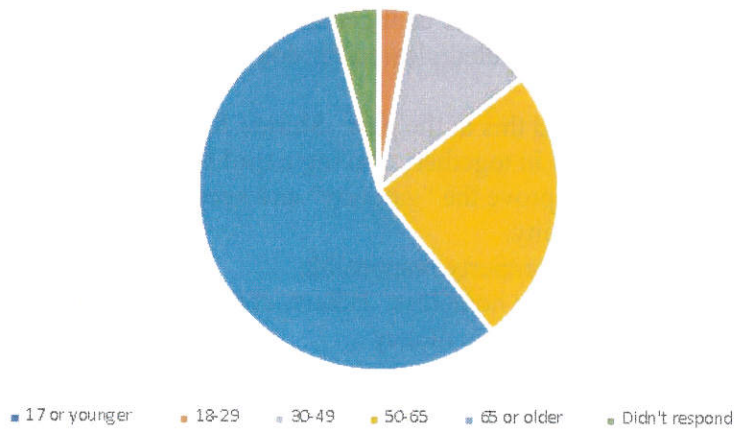




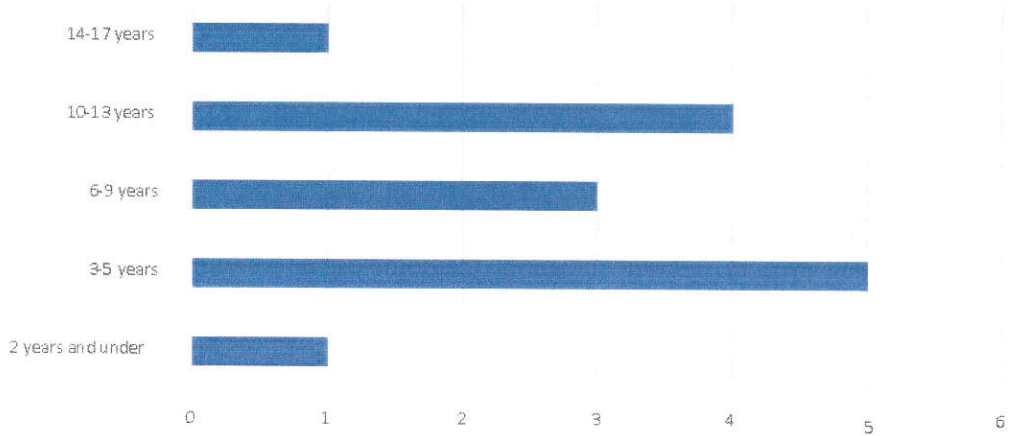
Would you support a dedicated millage to maintain/improve the city parks?



How old are you?



How old are the children living in your house hold (if any)



## **5. What should the city of Parchment focus on as a priority for future implementation**

### Comments:

"acquire land behind twisters"

"extend trail in front of Niebors and beyond"

"this would have to be 100% grant funded. I definitely do not want property taxes to increase"

"MORE PICKLEBALL COURTS!"

"All of the above!"

Paint streets

Mark and plot mileage markers around kindleberger park

Splash Pad (summer) Ice skating rink (winter)

less mowed spaces in Kindleberger

Plantings of native trees, shrubs, flowers relative to our zone

Maintain the grounds and playgrounds mainly. Continue to monitor for safety and security at night and lock it up.

Move green goose neck street lights into kindleberger park. They do nothing to enhance the image of parchment except to say we like to waste energy. They can be placed in park to enhance safety

Please do not put a splash pad in kindleberger park!

"none"

I don't leave my house, only to go to the doctors or hospital. I can't breathe when I get up and get around

definitely maintain what we already have. As we cant get all residents to shovel their sidewalks, would like to see the sidewalk along park ave. shoveled/cleared for dog walkers - maybe even one path inside park

organized activities for children, they did this in the past. Shirley Kishpaugh.

the three starred above (last three) all tie in together. Having a trail from the south end of town to the north end or into cooper is needed to improve the "gateway" and keep runners, walkers etc. off of riverview dr. I would also improve the city.

old factory removed, ie make owners of property responsible

tear down the paper plant that houses many homeless. Bikers, don't use expensive and continue to use riverview drive and other streets - why wast the money

establish a viewing deck on the riverbank across from glenn allen island

improve bathrooms, picnic shelters, moving the lower park gate so that the park is closed to traffic after sunset.

Additional park amenities or attractions...ie dog park, disc golf, roller hockey rink

save funds to maintain what we now have

## **7. Should portions of the former mill property be developed for recreational use**

### Comments:

"AS IN CLEAN IT UP"

Dog park?

"that would be awesome"

but how is it funded?

depends on the safety due to contamination

but tear it down its and eyesore and quit "housing" the homeless or we will have another ampersee homeless encampment Just tear it down and encourage the so called police dept to enforce no trespassing laws. Its been way too long.

yes along the river, no to the mill site

if there is \$\$\$ available

**8. Among the many city amenities, how important are parks and recreational opportunities to the quality of life in the city?**

Comments:

other than family, kindleberger the main reason we moved back  
those with children would greatly appreciate, I am sure! I don't use any currently.

**9. How would you be willing to support park improvements**

Comments:

Donation of time for park maintenance	20
participate in fundraising events for parks	17
Participate in a parks and rec commission to advise the city on matters concerning parks	9
donation of money for park improvements	29
volunteer in fundraising event for parks	15
I would not support park improvements	3

Other:

"I'm swamped with work just trying to keep my house afloat"

"City should apply for grants especially for the mill area!"

Millage

Hide from people and hope for the best

Can decide as more info becomes available

I pay a lot of taxes already

we pay high property taxes, especially this year, to support the city, schools, and services

raise taxes

if a private company had this mess they would be fined. How come the city can getway with this mess.

# City of Parchment Parks and Recreation Master Plan

## Notice of Public Review and Hearing

### **CITY OF PARCHMENT**

#### Notice of Public Hearing

TO THE RESIDENTS, PROPERTY OWNERS AND OTHER INTERESTED PERSONS OF THE CITY OF PARCHMENT, COUNTY OF KALAMAZOO, STATE OF MICHIGAN:

PLEASE TAKE NOTICE that the Planning Commission of the City of Parchment is making the Parchment Parks and Recreation Master Plan available for review by the public December 3, 2021 to January 3, 2022; and will conduct a public hearing for the purpose of receiving public input and comments regarding the Parchment Parks and Recreation Master Plan

**Monday, January 3, 2022, at 7:00 pm**  
**Via Zoom (login information available at**  
**[www.Parchment.org](http://www.Parchment.org)):**

Copies of the Parchment Parks and Recreation Master Plan are available for viewing online at [www.parchment.org](http://www.parchment.org) or in the Parchment City offices during regular business hours.

At the public hearing, all interested persons desiring to address the City Planning Commission shall be afforded the opportunity to be heard. If you are unable to attend, written comments may be submitted in lieu of virtual personal appearance by writing to the Planning Commission at Parchment City Hall, 650 S. Riverview, Parchment, MI 49004, or by email to [manager@parchment.org](mailto:manager@parchment.org). Written comments will be accepted until 3:00 pm Monday, January 3, 2022.

This notice is posted in compliance with the Open Meetings Act, Public Act 267 of 1976, as amended, (MCL 41.72a (2) (3)) and the Americans with Disabilities Act.

The City of Parchment will provide necessary reasonable auxiliary aids and services, such as signers for the hearing impaired and audio tapes of printed materials being considered at the hearing. Individuals with disabilities requiring such services should contact the Parchment City office as designed below:

City of Parchment  
Attn: Shannon Stutz  
650 S. Riverview, Parchment, MI 49004  
(269)349-3785

City of Parchment Parks and Recreation Master Plan  
Minutes of Public Hearing

City of Parchment Parks and Recreation Master Plan  
Minutes of Meeting to Pass Resolution

City of Parchment Parks and Recreation Master Plan  
Transmittal Letters to County and Planning Agencies

City of Parchment Parks and Recreation Master Plan  
Resolution Adopting Plan